



DEVELOPMENT



DELIVERY



SUPPLY

Catalent<sup>®</sup>  
DEVELOPMENT

your molecule has  
so much potential.  
our passion for early  
development can help  
you unlock it.



best technologies. broadest  
expertise. faster development.

**Catalyst + Talent.** Our name combines these ideas. As the world's #1 drug development, delivery and supply partner, we are the catalyst for your success.

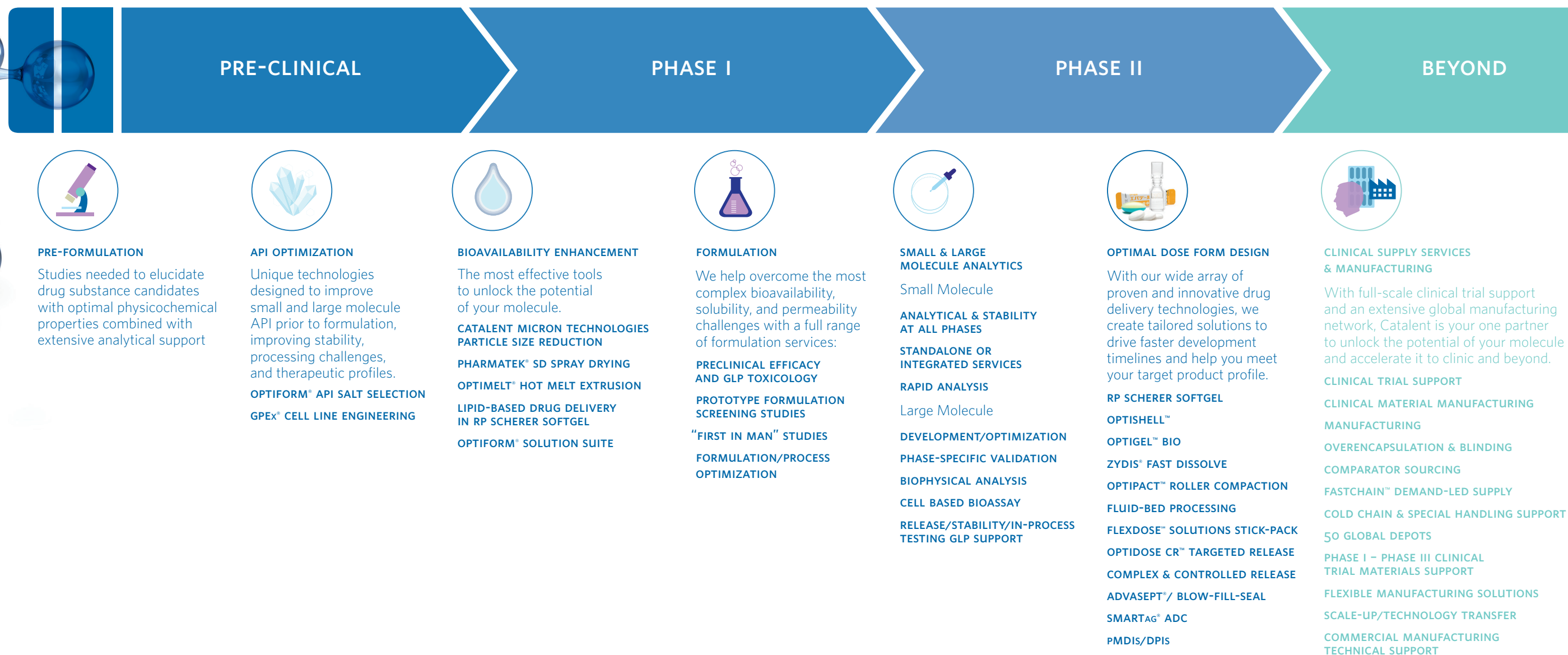
We've helped innovators in early phases develop thousands of molecules. We have the broadest toolkit of superior technologies to **overcome all your molecule's challenges**, including:

- Stability
- Solubility
- Permeability
- Bioavailability
- Processing difficulties
- Optimal dose form design

We integrate our deep scientific expertise and data-driven approach, supported with robust analytical testing services, to bring you **OptiForm® Solution Suite**, a parallel screening platform designed to rapidly and efficiently optimize bioavailability and formulation pathway.

Your molecule has so much potential. We share your passion to optimize it.

## COMPREHENSIVE EARLY PHASE DEVELOPMENT EXPERTISE FOR YOUR ORAL, STERILE, AND INHALED DOSE FORMS.



Discover more solutions with Catalent.

Call: +1 866 720 3148 GLOBAL  
+ 800 88 55 6178 EUROPE  
Email: [solutions@catalent.com](mailto:solutions@catalent.com)  
Visit: [www.catalent.com](http://www.catalent.com)



### OPTIFORM® SOLUTION SUITE

Solve complex bioavailability challenges for early phase molecules rapidly and efficiently with this accelerated, data-driven parallel screening and development platform, backed by world-class scientific expertise. Match the best technologies to your molecule and get the answers you need in **12 weeks!**



### OPTIFORM® SOLUTION SUITE BIO

Our newest offering employs advanced formulation platforms including OptiGel™ Bio and Zydis® Bio in a parallel screening model that assesses the oral delivery potential of your peptide or small protein. Receive *in vivo* study material to assess the oral delivery potential of your macromolecule in as little as **3 weeks!**

# 20<sup>+</sup>

R&D TEAMS WITH  
1400 SCIENTISTS



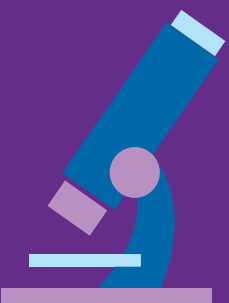
# 30<sup>+</sup>

FACILITIES ON 5 CONTINENTS WITH  
OVER 5 MILLION SQ FT OF  
MANUFACTURING & LABORATORY SPACE



# 700<sup>+</sup>

ACTIVE DEVELOPMENT  
PROGRAMS ACROSS  
OUR NETWORK  
ANNUALLY



# 70<sup>+</sup>

BILLION DOSES



# 50%

OF RECENT  
FDA APPROVALS TOUCHED

# 180<sup>+</sup>

PRODUCTS LAUNCHED  
ANNUALLY

# 1100<sup>+</sup>

PATENTS AND PATENT  
APPLICATIONS IN ADVANCED  
DELIVERY, DRUG, AND  
BIOLOGICS FORMULATION  
AND MANUFACTURING

more products. better treatments. reliably supplied.™

**Catalent Pharma Solutions**  
14 Schoolhouse Road  
Somerset NJ 08873 USA

GLOBAL +1 866 720 3148  
EU + 800 88 55 6178  
[www.catalent.com](http://www.catalent.com)  
[solutions@catalent.com](mailto:solutions@catalent.com)



DEVELOPMENT



DELIVERY



SUPPLY

ADVASEPT, GPEx, OptiForm, OptiMelt, Pharmatek, SMARTag and Zydys are registered trademarks of Catalent Pharma Solutions. FastChain, OptiDose, OptiGel, OptiPact and OptiShell are trademarks of Catalent Pharma Solutions. FlexDose is service mark of Catalent Pharma Solutions.

Lit. No. CAT-DEV-BR (12/16)

© Copyright 2016 Catalent Pharma Solutions, Inc. All rights reserved.